

A. Replied on 7.1.77

(A GOVT. OF INDIA, DEPARTMENT OF ATOMIC ENERGY ENTERPRISE)

SHAFETFO

REV. C. KEYWAY ADDED

12/11/04

APPROVED

maths

19.1.72

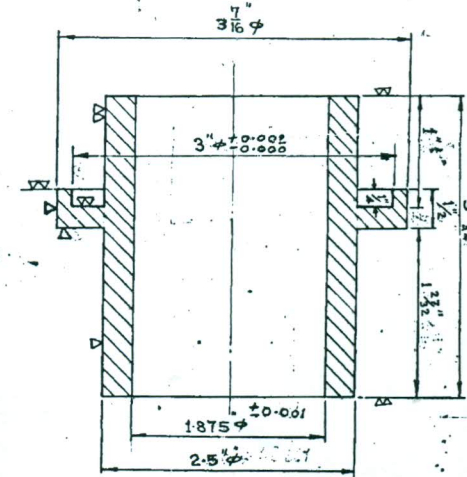
REVISION 'C'

COMPOSITION OF MATERIAL

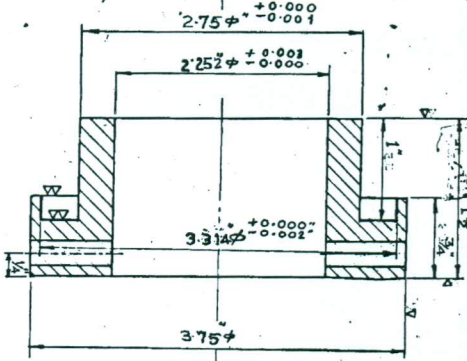
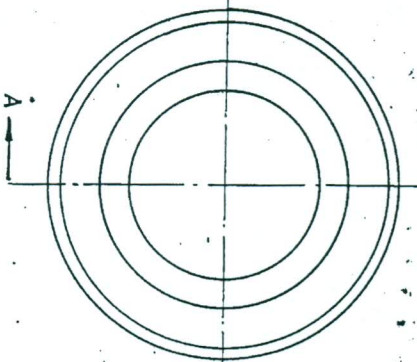
NOTES

11

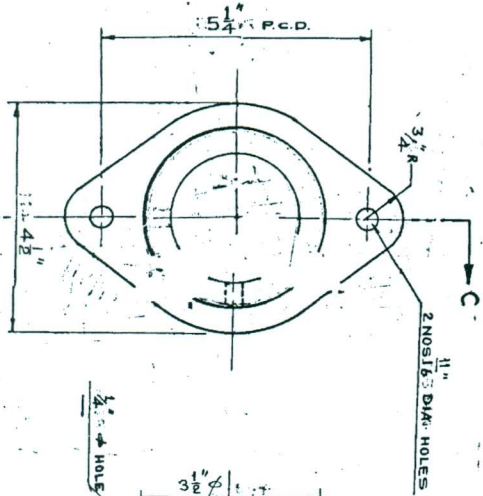
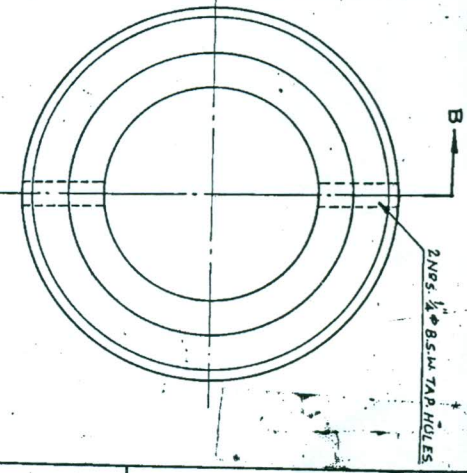
2



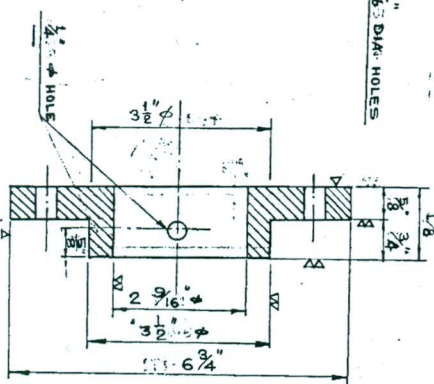
① BUSH FOR IMPELLER SIDE COVER
SCALE: 1:1



② BUSH FOR REAR COVER
SCALE: 1:1



③ GLAND
SCALE: 1:2



SECTION AT 'C.C'

NOTE: - CAST IRON
MATERIAL: SS-316

ALL DIMENSIONS ARE IN MM.

AS PER THE INSTRUCTION OF ENGINEER, DIMENSIONS ARE MODIFIED.

THE POSITION OF 1/8\"/>

URANIUM CORPORATION OF INDIA LTD. JADUGUDA

(A GOVT. OF INDIA, DEPARTMENT OF ATOMIC ENERGY ENTERPRISE)

TRACED: [Signature]

DRAWN: [Signature]

CHECKED: [Signature]

APPROVED: [Signature]

DATE: 29.7.71

SCALE: AS SHOWN

PROJECTION: [Blank]

REVISION: [Blank]

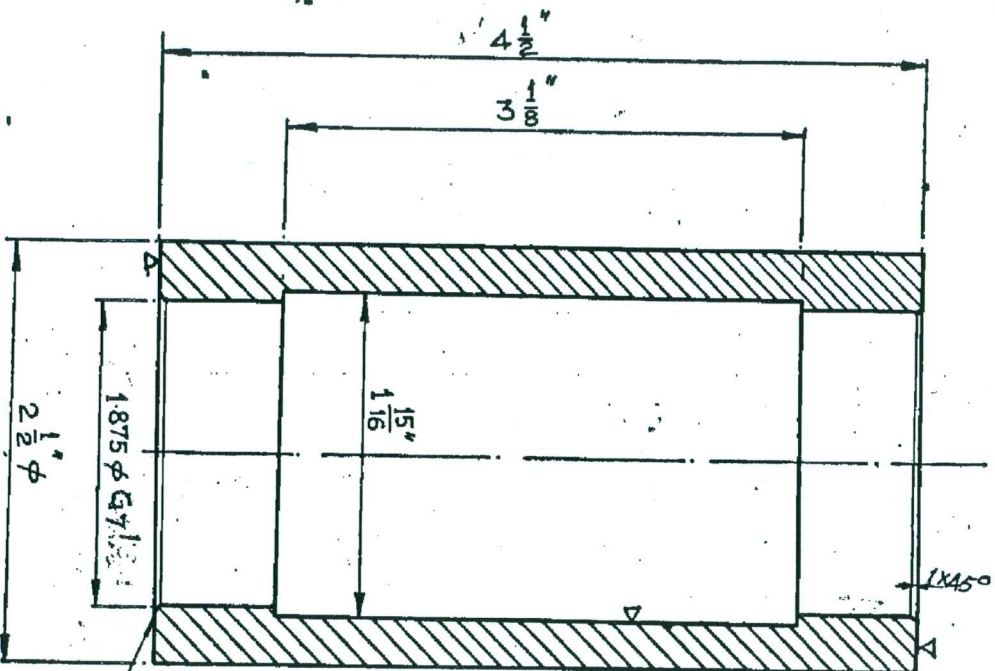
DWG. NO.: UCI/M-432/4

REVISION: A

URANIUM CORPORATION OF INDIA LTD. JADUGUDA
(A GOVT. OF INDIA, DEPARTMENT OF ATOMIC ENERGY ENTERPRISE)

DATE 19.4.72

SUB. SHAFT SLEEVE FOR DENVER PUMPAWN *myastka* CHECKED *myastka*
REVISION A 5"x5" & 6"x6" APPROVED *myastka* DRG. NO. UCI/M-5046



MAT'L: SS-316 *myastka*

REV. A' TOL. CHANGED ON 18-1-2000 *myastka*