

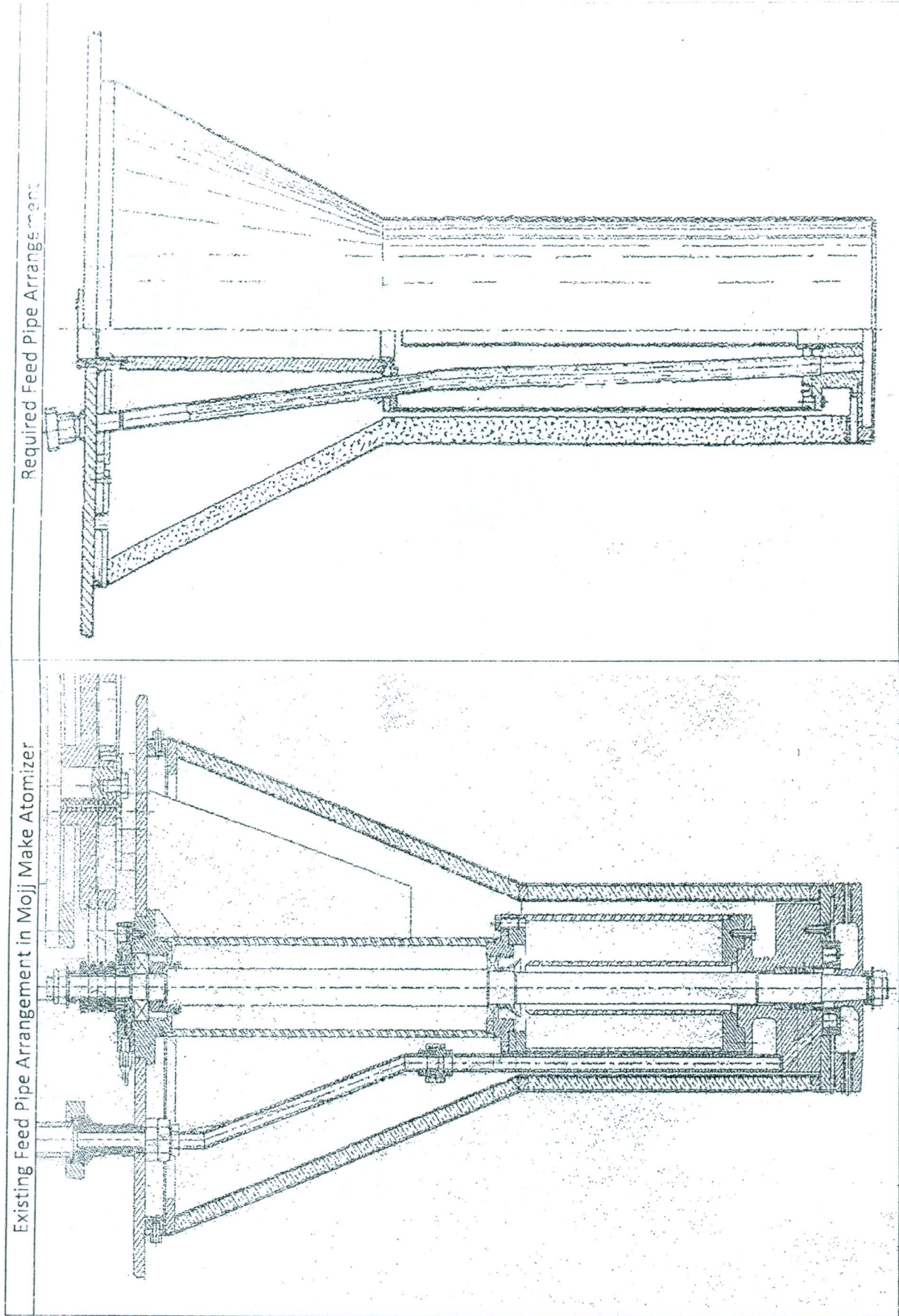
TECHNICAL SPECIFICATIONS FOR SELECTION OF ATOMIZER

Complete set of High Speed Centrifugal Rotary Disc Atomizer, wheel spindle (shaft) shall be driven by a motor through a flat belt and pulley arrangement, for atomizing the feed as detailed below :

Duty	: To dry slurry containing MDU solid & liquor having 25 gm/ltr. Of chloride ion and 25 gm/ltr of sulphate ion with 35% w/w solids at metered rate
Rate of Evaporation	: 330 litres/hr
Speed	: 10,000 rpm of shaft
pH	: 6.5 to 7.2
Specific Gravity of solid	: 4.0
Size of solid	: 100 % passing through 200 mesh 80 % passing through 300 mesh
Specific Gravity of liquid	: 1.0
Temperature	: 600 ° C (inlet) & 230 ° C (outlet)
MOC	: Suitable for handling MDU slurry with above mentioned composition at 10,000 rpm and 600 ° C (inlet) temperature Wetted parts : Stainless Steel 310 Non Wetted parts / Non exposed parts : SS 316 Atomizer Wheel : SS 310 Wheel orifice / nozzle : Si Carbide
Drive	: Through Flat Belt, pulley, motor
Type	: Rotary Wheel
Lubrication System	: Gravity, Wick
Existing System	: Anhydro make (Demark) Atomizer Model CB – 160 and Mojj make Atomizer Model – ATM 160 under development
Identical to	: Complete set of High Speed Centrifugal Rotary Disc Atomizer already supplied against PO No.: 2/8178/8599 dt: 26/08/2013 by M/S Mojj Engineering with some modifications as below: <ul style="list-style-type: none">• Modification of Feed Pipe as shown in Fig. 1• Drive Arrangement as shown in Fig. 2



Modification of Feed Pipe Arrangement

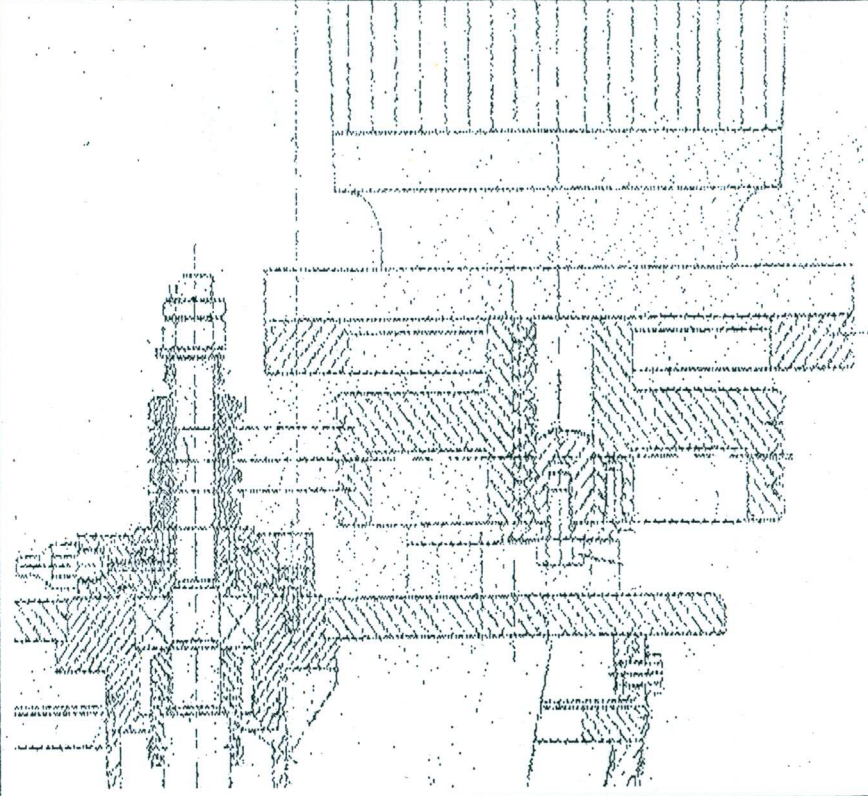


228

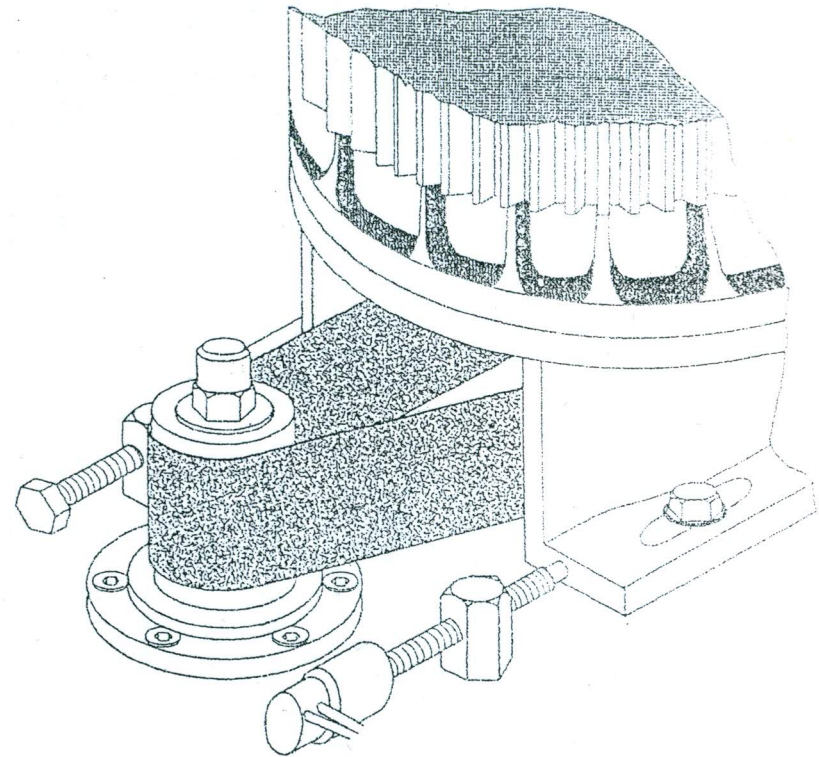
Modification of Drive Arrangement

V Belt Drive to be modified into Flat Belt Drive

Existing V Belt Drive Arrangement in supplied Mojj Make Atomizer



Required Flat Belt Drive Arrangement



The offer must be submitted in the given format

Atomizer Make & Model offered	:	
Atomizer type offered	:	
Speed of the Atomizer	:	
Suitability of Atomizer for Particle Size	:	
Type of Power Transmission(Flat belt / V Belt Drive)	:	
Make, Size and numbers of belt	:	
Drive and Driven Pulley Size	:	
Rate of Evaporation	:	
Efficiency of Atomizer	:	
Working Temperature	:	
BHP required	:	
Motor offered Make, Rating, Speed and Frame size	:	
Weight of bare Atomizer (Kg)	:	
Weight of Motor (Kg)	:	
Type of lubrication offered	:	
Lubricating oil Grade	:	
Installed Bearing Make	:	
Installed Bearing Number	:	
Material of Construction of		
a) Wetted parts	:	
b) Non Wetted parts	:	
c) Atomizer Wheel	:	
d) Orifice / Nozzles	:	
e) "O" Rings / Gaskets	:	
Delivery Period	:	
Validity of Offer	:	

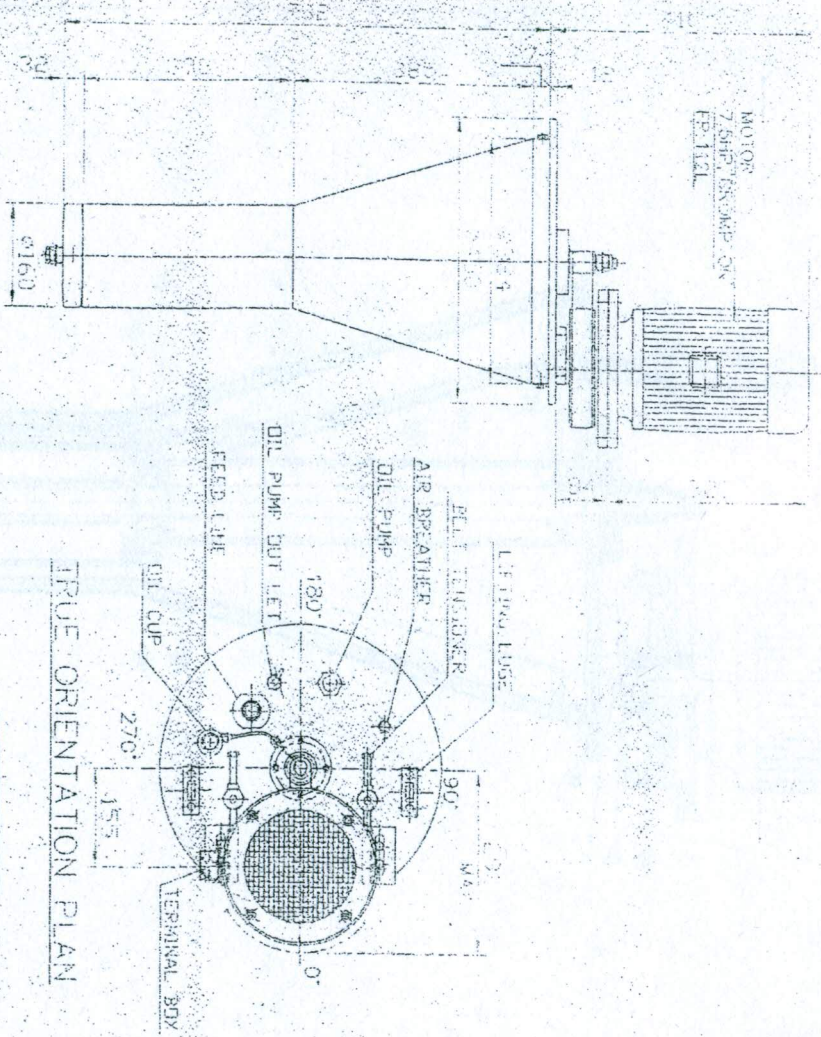
Note : The offer must contain confirmation of the following details :

1. Atomizer outside dimensions shall be as per Rotary Atomizer 160 already supplied against PO No.: 2/8178/8599 dt: 26/08/2013 (Model No.: ATM – 160) your ref. details.: Job No. – MMS687, Reld. by – DCZ dt: 26/09/2013 .
2. The offered Rotary Atomizer shall have interchangeability of spares with existing Rotary Atomizer 160 already supplied against PO No.: 2/8178/8599 dt: 26/08/2013.
3. Essential spares to be supplied along with atomizer which shall be inclusive in quoted price of atomizer price :
 - a) Spare Spindle : One no.
 - b) Spare Atomizer Wheel : One no.
 - c) Spare Orifice / Nozzles : One set
 - d) Spare Drive Belts : 3 sets
 - e) Atomizer Stand : One no.
 - f) Tool Set : One set
 - g) Spare set of 'O' Rings / Gaskets : Two sets
4. Party must submit the list of optional spares required for two years trouble free operation.
5. Operation and Maintenance Manual (two sets) to be supplied along with supply.
6. Party must mention details of installed bearings (Make & Bearing Numbers) and Oil Seals in their offer. Bearings of SKF / FAG make shall be preferred.
7. Party must enclose GA dimensional drawing & Assembly drawing of Atomizer along with their offer.
8. The offer must contain bifurcated price of Atomizer, Drive Motor, Essential spares etc. and Taxes, duties, P & F charges should be mentioned clearly.
9. Guarantee : The Atomizer, complete in all respects including electrical, instrumentation and safety devices must be guaranteed for trouble free performance for 12 months from the date of commissioning.
10. Make of motor shall be ABB / Crompton Greaves / Kirloskar
11. **Payment Terms:**
 - a) 90% of order value within 30 days from the date of receipt and acceptance of material at our stores.
 - b) Balance 10% of order value within 30 days after satisfactory commissioning in supervision of your representative.
12. Delivery of material required within 6 – 8 weeks of PO.

Offer without the aforesaid details will be rejected out rightly.



ELEVATION		TRUE ORIENTATION PLAN	
1:1	1:1	1:1	1:1



ELEVATION

TRUE ORIENTATION PLAN

ALL DIMENSIONS ARE IN mm UNLESS OTHERWISE STATED.
APPROX TOTAL WT. = 140 Kgs.

FOR ORDER	
JOB NO. :-	MMS687
RELD. BY. :-	DCZ
DATE. :-	26.09.2013



MOJ ENGINEERING SYSTEMS LTD.
PROCESS DESIGNERS AND PROJECT ENGINEERS

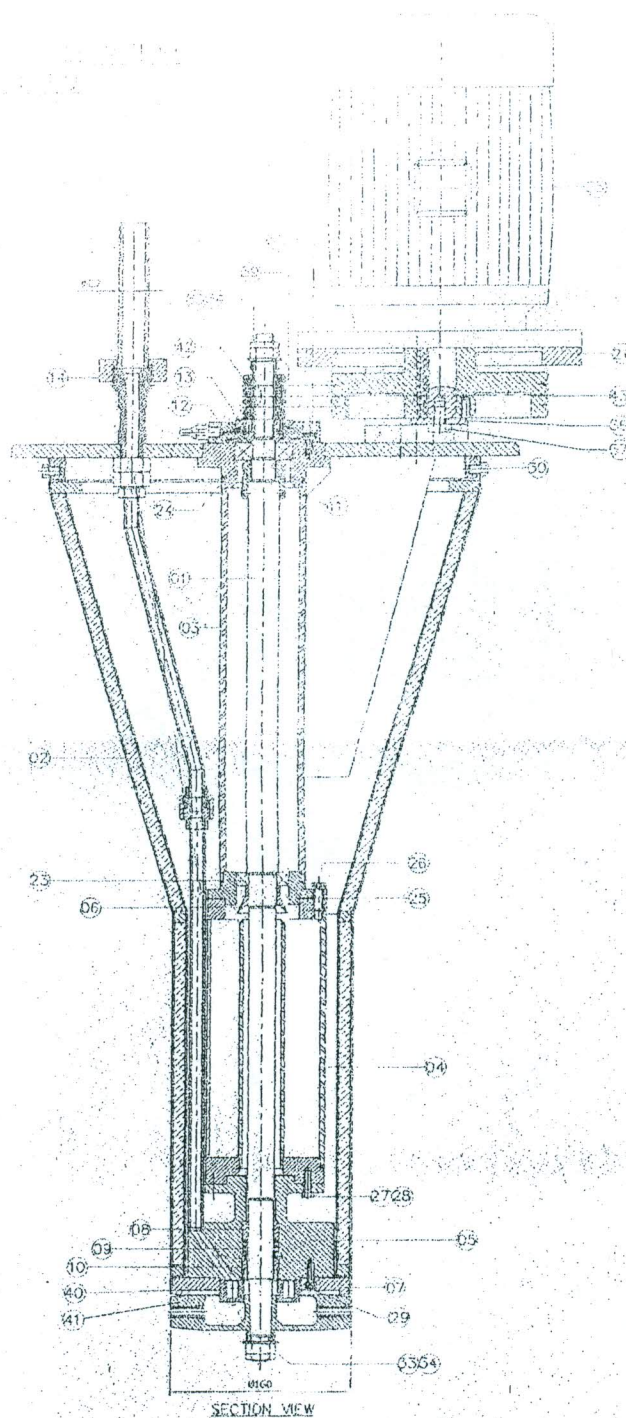
OVERALL C.A. OF ATOMISER Ø160

TITLE		CODE NO.	
DRAWN	D.P.I.		
CHECKED			
APPROVED			
DATE 27/12/2000		SCALE 1:10	DRAWING NO. MES/D01/079
		REV 1	SIZE A4

Z:\RPE C:\RPE\ATOM MES\ATOM150.DWG

Dimensional Detail of Existing Atomizer Supplied against PO No. : Z/8178/8599 dt: 26/08/2013

208



SECTION VIEW

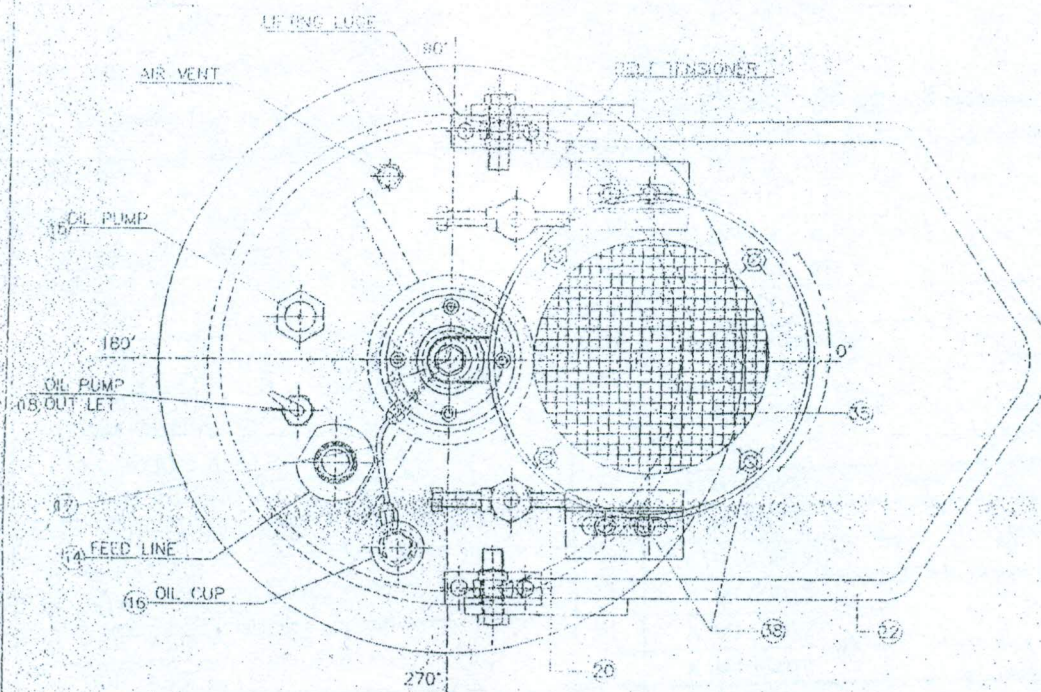


MOJU ENGINEERING SYSTEMS LTD.
PROCESS DESIGNERS AND SPECIAL ENGINEERS

MES/J/MMS687/ATM160/MANUAL

Part Assembly Detail of Existing Atomizer Supplied against PO No. : 2/8178/8599 dt: 26/08/2013

Handwritten signature



TRUE ORIENT PLAN



MOJJ ENGINEERING SYSTEMS LTD.
PROJECT DESIGNER AND PROJECT MANAGERS

MES/J/MMS687/ATM160/MANUAL

Orientation Detail of Existing Atomizer Supplied against PO No. : 2/8178/8599 dt: 26/08/2013

107

1	SCREW	1	ITEM 1
2	WASHER	1	ITEM 2
3	MOTOR FLANGE	1	ITEM 3
4	EX. LOCK BOLT	1	ITEM 4
5	EX. NUT WITH WASHER	2	ITEM 5
6	WOODRUFF KEY	1	ITEM 6
7	EX. SCREW	1	ITEM 7
8	EX. BOLT	1	ITEM 8
9	EX. SCREW	1	ITEM 9
10	EX. HD SCREW	1	ITEM 10
11	GASKET	1	ITEM 11
12	EX. SCREW	1	ITEM 12
13	GASKET	1	ITEM 13
14	TOP BEARING	1	ITEM 14
15	BOTTOM BEARING	1	ITEM 15
16	LIFTING HOOD ASSY.	1	ITEM 16
17	MOTOR MOUNTING BASE	1	ITEM 17
18	BELT TENSIONER ASSY.	1	ITEM 18
19	AIR BREATHER	1	ITEM 19
20	OIL OUTLET ASSY.	1	ITEM 20
21	OIL PIPE ASSY.	1	ITEM 21
22	OIL CUP ASSY.	1	ITEM 22
23	OIL PUMP ASSY.	1	ITEM 23
24	FEED CONNECTOR + FEED LINE PIPE	1	ITEM 24
25	BEARING LOCKNUT	1	ITEM 25
26	SHAFT HOLDING FLANGE	1	ITEM 26
27	BEARING LOCATOR	1	ITEM 27
28	EXTERNAL THREADED BUSH	1	ITEM 28
29	SPRING	1	ITEM 29
30	BUSH	1	ITEM 30
31	CONE MOUNTING FLANGE	1	ITEM 31
32	OIL THROWER	1	ITEM 32
33	BUSH HOUSING	1	ITEM 33
34	LOWER HOUSING	1	ITEM 34
35	UPPER HOUSING	1	ITEM 35
36	CONE	1	ITEM 36
37	SHAFT	1	ITEM 37
38	DESCRIPTION	38	ITEM CODE
MOJI ENGINEERING SYSTEMS LTD.		MES/J/MM3667/ATM16001/MANUAL	
(SINGL. FILE)			

Part Details of Existing Atomizer Supplied against PO No. : 2/8178/8599 dt: 26/08/2013 and
Modification required in Marked Parts

127