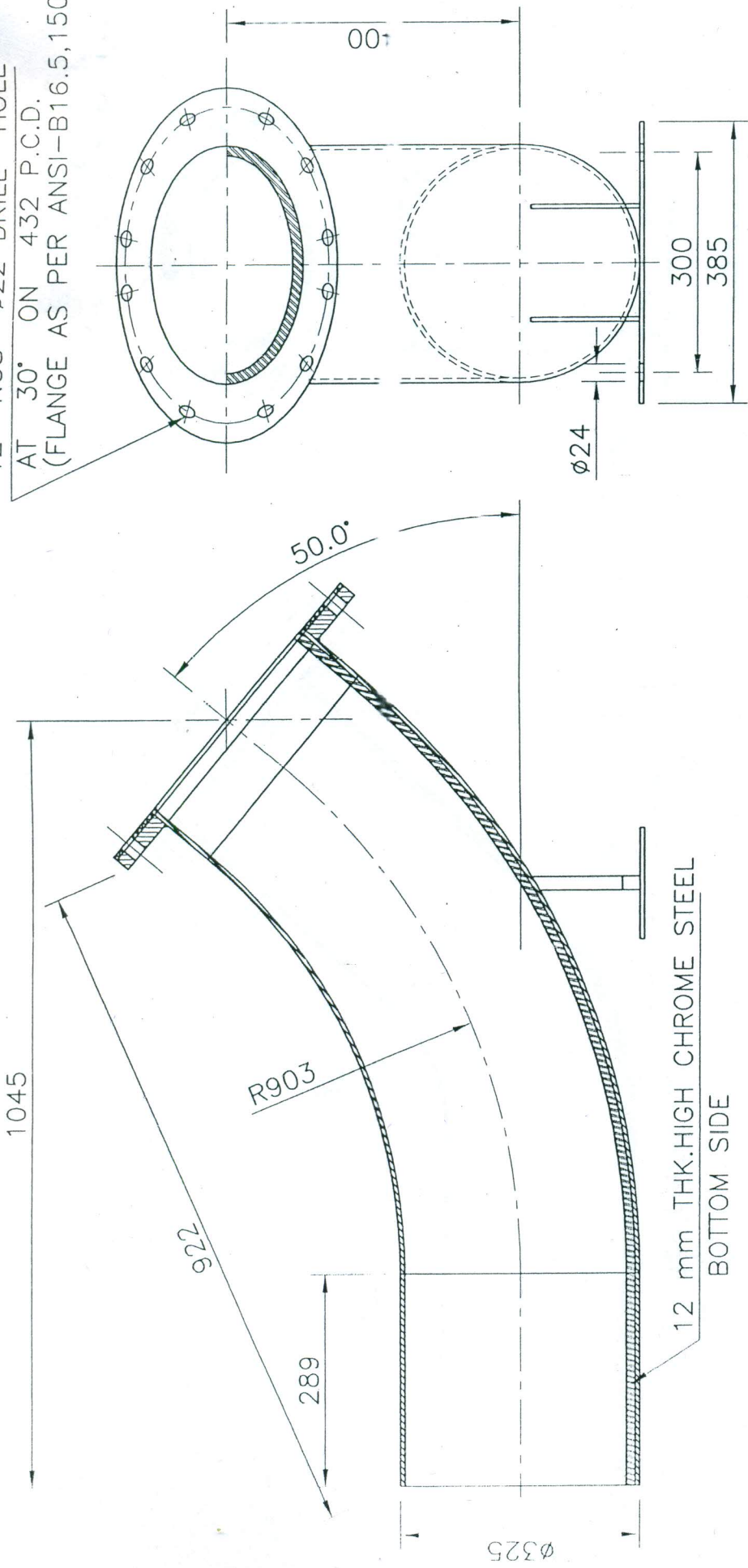


12 NOS $\phi 22$ DRILL HOLE
AT 30° ON 432 P.C.D.
(FLANGE AS PER ANSI-B16.5,150)



12 mm THK.HIGH CHROME STEEL
BOTTOM SIDE

URANIUM CORPORATION OF INDIA LTD. TURAMDIH MINES
(A GOVT. OF INDIA ENTERPRISE, DEPT. OF ATOMIC ENERGY)



U/Th. 49001.11

CHECKED

APPROVED

SCALE

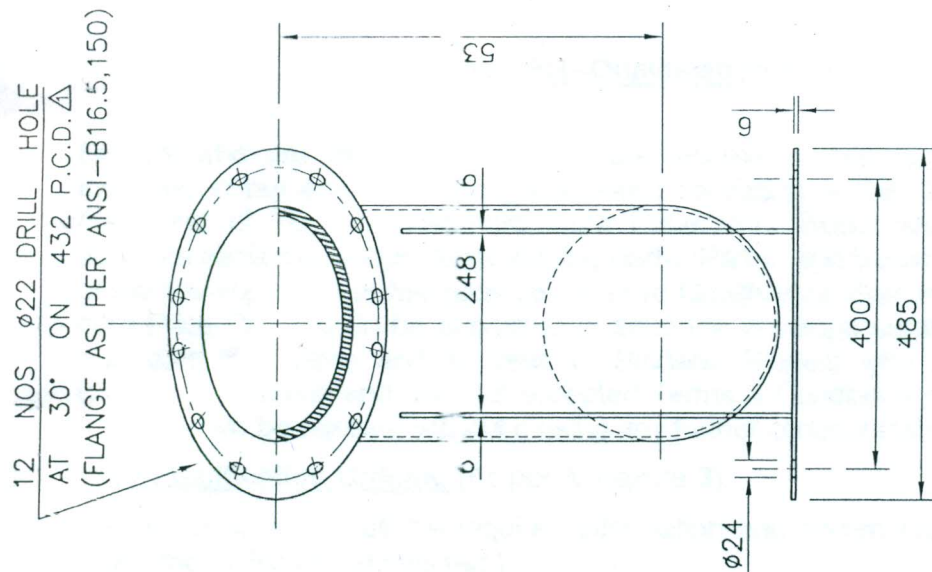
DIMENSIONS IN MM

ROD MILL FEED BEND

DRG.NO.- UCT-1 / MECH / R-MILL / 03 A REV.-2

PROPERTIES OF CHROME STEEL
IS 4771 TYPE-3, Cr-24%

REV.	REV BY	DATE	DESCRIPTION
2	Anish	23.11.16	MATERIAL CHANGED
1	Anish	19.12.15	FLANGE P.C.D. & HOLE LOCATION CHANGED



DRG.NO.- UCT-1 / MECH / B-MILL / 02 A	REV.- 2
---------------------------------------	---------