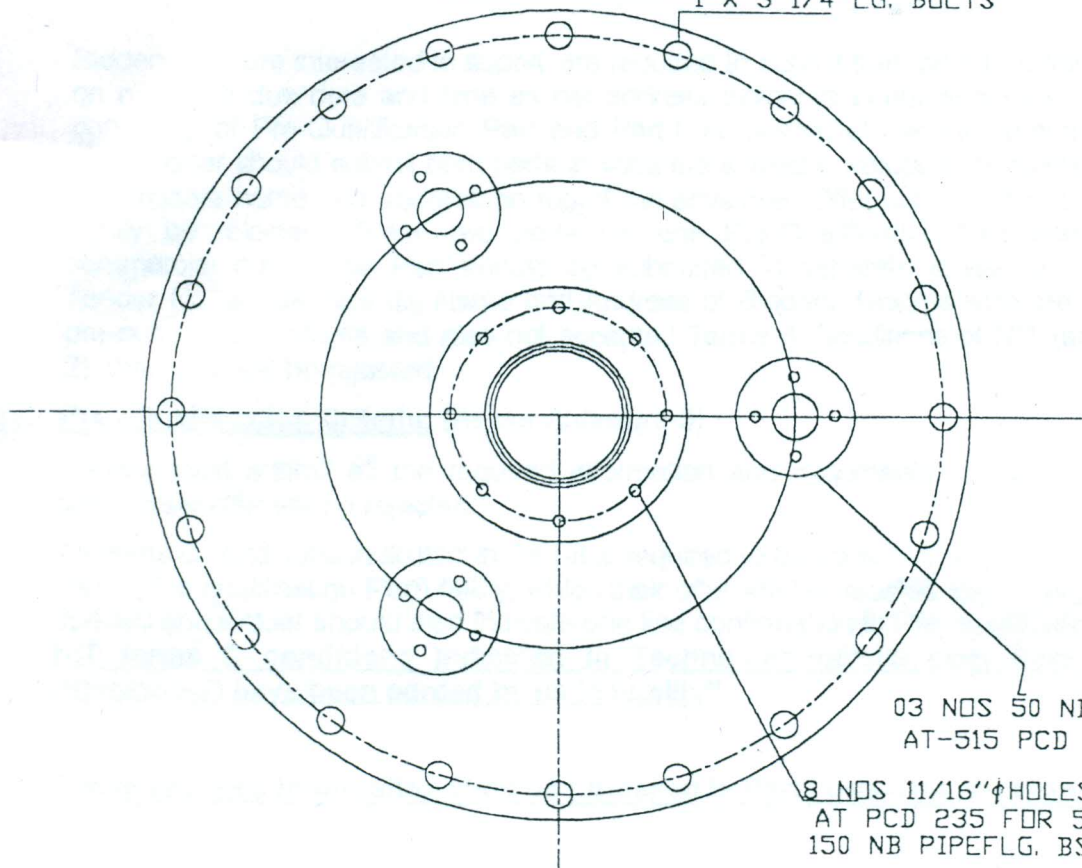
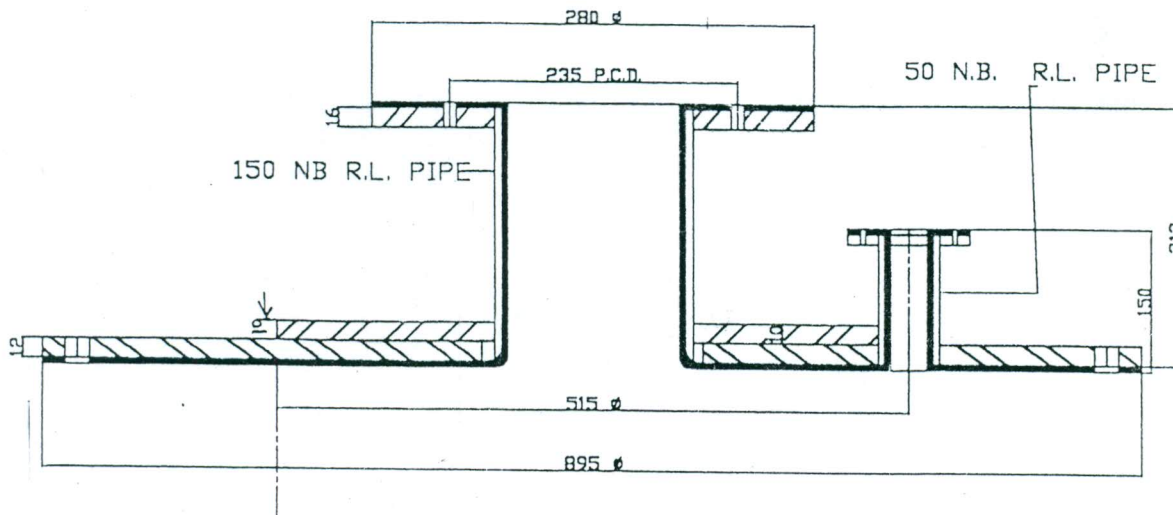


20 NOS 1 1/8" HOLES AT PCD 838 FOR
1"X 3 1/4" LG. BOLTS



03 NOS 50 NB NIPPLE
AT-515 PCD FLG.BS-10TAB-D

8 NOS 11/16" HOLES
AT PCD 235 FOR 5/8" BOLTS
150 NB PIPE FLG. BS-10 TAB -D



- 1 WELDING GROUND TO RADIUS FOR R.L.
- 2 5MM THK R.LINING; C HARDNESS 45 \pm 5 SHORE -A
TENSILE STRENGTH -180 Kg/Cm² ASH CONTAIN 10% MAX.
- 3 ALL PIPES SHOULD IS-1239 PART-1 "C" CLASS

DESIGNED BY ANJANI

APPROVED BY AB

BOTTOM FLANGE WITH NOZZLE FOR PACHUCAS

URANIUM CORPORATION OF
INDIA

DRG.NO-UCI-M-738 /B REV-B