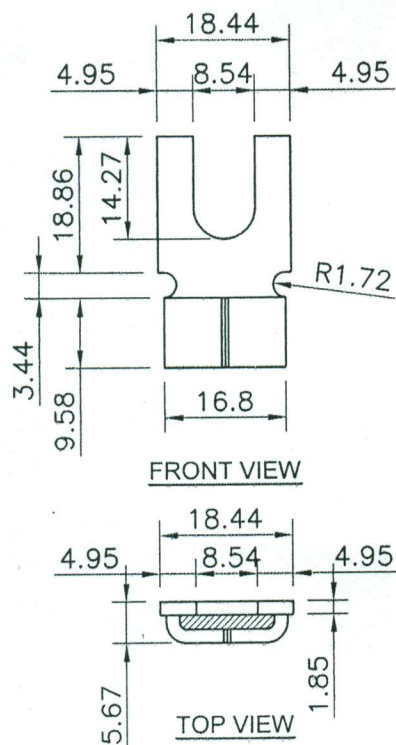


PART NO 1



PART NO 2

TYPE : BE 22Z1  
FRAME SIZE : TPR 450 E

*S. N. Kumar*  
S. N. Kumar/एस.न. कुमार  
महायुक्त नियंत्रक (मंडार एवं क्रय)  
Asst. Controller of (S&P)



URANIUM CORPORATION OF INDIA LTD. TURAMDHIH MILL  
(A GOVT. OF INDIA ENTERPRISE, DEPT. OF ATOMIC ENERGY)

DRN. Rajesh 21.09.13  
CHECKED D.P. Singh  
APPROVED G. DHAR  
SCALE - N.T.S.  
DIMENSIONS IN MM

TITLE  
CARBON BRUSH FOR 260 KW / 650 KV  
6.6 KV SLIPRING MOTOR

DRG.NO.- MILL/TMD/ELECT.-18

REV.-0

**Name Plate Specification for 260 KW, 6600 Volt, 3 phase, Slip Ring Induction Motor**

**Make - Crompton Greaves**

**KW (H.P):** 260 (348)

**IS:** 325 : 1996

**RPM:** 1480

**Frame:** TPR 355 D

**Ins. Class:** F

**Enclosure:** CACA (IPW 55),

**M/C No:** 2004017 / 2

**Freq:** 50 Hz

**Weight:** 3300 Kg

**Volts:** 6600

**Amp:** 29

**Rv:** 520 V

**RA:** 295 A

**Amb:** 50 °C

**Alt:** 1000 m

**Duty:** S1

**Rating MCR GD<sup>2</sup> (Motor):** 36 Kg m<sup>2</sup>

**Full load Efficiency:** 89.00%

**Bearing (DE):** NU221 C3

**NDE:** NU 6321 C3

**Lubricant:** Servogen 2 of IOC or Equivalent

**Relubrication:** DE 3000 Hrs  
NDE 5000 Hrs

*Ray*

*S.N. Kumar*  
S. N. Kumar/एस० एन० कुमार  
सहायक नियंत्रक (भंडार एवं क्रय)  
Asst. Controller of (S&P)