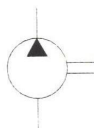


## PVR50 Series Single Vane Pumps

These pumps are widely used as a source of hydraulic power. They combine stable performance and robust construction with a wide range of delivery rates.

Graphic Symbol



## Specifications

Model Number	Geometric Displacement cm <sup>3</sup> /rev.	Max. Opr. Pressure Kg/cm <sup>2</sup>	Output Flow and Input Power	Shaft Speed Range r/min.		Mass (Approx.) Kg.	
				Max.	Min.	Flange Mounting	Foot Mounting
PVR50-13	10.0	175	Ref. Page 8, 9 & 10	2000	600	12	14.7
PVR50-20	15.0						
PVR50-26	21.0						
PVR50-30	24.5						
PVR50-36	29.5						
PVR50-39	31.5						
PVR50-45	39.0						
PVR50-51	43.0						
PVR50-56	46.0						

## Model Number Designation

Model Number Designation									
F-	PVR50	-L	-F	-13	-R	A	A	-31	80
Applicable Hydraulic Fluids	Series Number	Type of Mounting	Type of Pipe Connection	Nominal Displacement	Direction of Rotation	Discharge Port Position	Suction Port Position	Design Number	Design Standard
					As Viewed From Shaft End				
F: For Phosphate Ester Type Fluids (Omit if not required)	PVR50	L: Foot Type	F: Flange Connection	13	R: Clockwise (Normal)	(See Drawing) A: Normal (Upward) B: Bottom R: Right L: Left	(See Drawing) A: Normal (Upward) B: Bottom R: Right L: Left	31	80
				20					
				26					
				30					
				36					
				39					
				45					
				51					
				56					

\* Design numbers subject to change from 30 to 39, but installation dimensions remain as shown.

\* For instructions regarding changing the port positions, consult YUKEN INDIA LTD.

## Cartridge Kit Model Number

CPVR50	-13	-R	-31
Model Number	Nominal Displacement	Shaft Rotation	Design No.
CPVR50	13	R: Clockwise (Normal)	31
	20		
	26		
	30		
	36	L: Counter-Clockwise	
	39		
	45		
	51		
56			

\* For instructions regarding replacing cartridge kit, consult YUKEN INDIA LTD.

**"PVR" Series Single Vane Pumps**